

COMPLIANCE

What's good about complying with the Overberg District Municipality's Municipal Health Services By-laws:

- Reduces risks in businesses by facilitating the right actions and clear understanding of the MHS By-laws.
- Enhances consistency which aid in the avoidance of unnecessary fines related to non-compliances.
- Improves operational efficiency and safety.
- Fosters customers trust.
- Reduces legal problems.
- Improves employee engagement and retention.
- Enhances public relations in terms of online advertisements.



Overberg District Municipality
26 Long Street
Private Bag X22
BREDASDORP
7280
Telephone (028) 425 1157
Fax (028) 425 1014

**For more information contact
Local Environmental Health
Practitioner / Health Inspector**

CAPE AGULHAS:

Tel.: (028) 425 1157

OVERSTRAND:

Tel.: (028) 313 1243

THEEWATERSKLOOF:

Tel.: (028) 212 1121

SWELLENDAM:

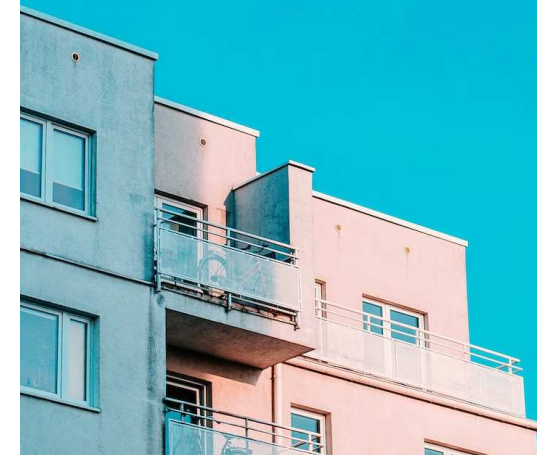
Tel.: (028) 514 1182

facebook.com/OverbergDM

twitter: @OverbergDM



ACCOMMODATION ESTABLISHMENTS



ACCOMMODATION ESTABLISHMENT

An establishment providing overnight lodging for holiday spenders and other travelers in rooms or apartment units.



TYPES OF ACCOMMODATION ESTABLISHMENTS:

- Motels
- Hotels
- B&Bs
- Game lodges
- Guesthouses and home-stays
- Holiday parks and campgrounds
 - Chalets
 - Cottages
- Self-catering
 - Resorts

COMPLIANCE:

Accommodation Establishments are inspected by Environmental Health Practitioners ensuring compliance with regards to the Overberg District Municipality Municipal Health Services By-laws, 15 July 2019.



REQUIREMENTS FOR PREMISES OF ACCOMMODATION ESTABLISHMENT

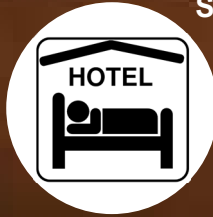
ADMINISTRATION



Establishments should operate under the following documents which are issued by Environmental Health Practitioners:

- Valid Permit (issued once)
- Valid Health Certificate (Renewed annually)
- Valid Certificate of Acceptability (if catering for guests and is Renewed annually)
- Zoning certificate (obtained from the local authority)

STRUCTURE



- Smooth ceiling and walls
- Even floors in good condition
- Adequate ventilation and lighting
- Disability facilities (ramps)
- Flushable toilets with toilet paper
- Hand wash basin equipped with soap, hand drying facility

EMERGENCY EQUIPMENT



- Evacuation plan
- First aid kit
- Exits clearly marked

WASTE MANAGEMENT & VECTOR CONTROL



- Waste management facilities prior collection
- Vector control plan

